



OPTISON:
FDA-approved
imaging drug,
NOT a blood
product!¹

→ Learn more here

OPTISON™
(Perflutren Protein-Type A Microspheres
Injectable Suspension, USP)

INDICATIONS AND USAGE
OPTISON (Perflutren Protein-Type A
Microspheres Injectable Suspension,
USP) is indicated for use in patients
with suboptimal echocardiograms to
opacify the left ventricle and to
improve the delineation of the left
ventricular endocardial borders.

IMPORTANT SAFETY INFORMATION

**WARNING: SERIOUS
CARDIOPULMONARY REACTIONS**
Serious cardiopulmonary reactions,
including fatalities, have occurred
uncommonly during or following
perflutren-containing microsphere
administration. Most serious
reactions occur within 30 minutes of
administration

- Assess all patients for the presence
of any condition that precludes
OPTISON administration
- Always have resuscitation
equipment and trained personnel
readily available

Reference:
1. Optison [prescribing information].
Marlborough, MA: GE Healthcare. 2021.

Featured News

Your Donations in Action

We congratulate **Luca Cristin, MD**, for winning the Alan S. Pearlman Research Award! Our donors' contributions help us invest in the future of echocardiography and we are proud of the impact of our Research initiative.



“Winning the Alan S. Pearlman Research Award as the highest-scoring early investigator was an incredible honor. The [ASE Scientific Sessions] conference featured many interesting sessions, with lots of different points of view and experiences that gave me kind of a wider picture of research in echocardiography... Overall, the ASE Scientific Sessions provided invaluable insights and connections that will greatly benefit my future research work in the field.”

-Luca Cristin, MD, 2024 Alan S. Pearlman Research Award Winner

Consider allocating your next donation to Research to support the next generation of cardiovascular ultrasound professionals, like **Dr. Cristin**.

Announcements

Deadline Approaching: Apply to Chair the ASEF Board By August 30

The ASE Foundation is [accepting nominations for Board Chair](#). This three-year term will begin January 1, 2025. If you are an active ASE member and meet the [criteria outlined](#), ask a friend or colleague who is also a member to submit a nomination on your behalf. Candidates must submit all required materials by **August 30**. Questions? Contact Nominations@ASEcho.org.

Anticipation is Brewing for Coffee Day 2024

Are you ready to *espresso*

ECHO
FLORIDA™

October 12–14, 2024

Disney's Grand Floridian Resort & Spa
Walt Disney World® Resort
Lake Buena Vista, FL

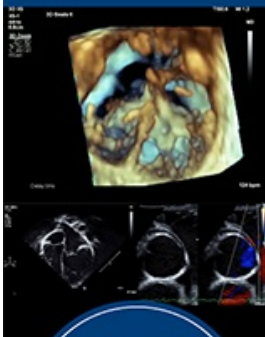


EARLY
REGISTRATION ENDS
SEPT. 7

3RD ANNUAL
**ECHO IN PEDIATRIC
& CONGENITAL
HEART DISEASE**

ECHO ACCESS™
VIRTUAL EXPERIENCE

October 26–27, 2024



FEATURING
**International
Faculty**

Don't Miss Out.
Register Today!

your love for the ASE Foundation? The [fundraiser](#) you have come to know and love will return this September! Mark your calendar for **September 29 – October 5** and help us brew up \$5,000 towards Cardiovascular Sonographer Leadership Development. “Buy us a cup” by donating what you normally spend on coffee to the ASE Foundation.



Already planning to participate? Pledge your support early. Contact Sophie Pumphrey at SPumphrey@ASEcho.org to let her know you'd like to make a pledge. When you donate, don't forget to post a picture of your coffee, or better yet, a selfie with your coffee, and tag [@ASE360](#) with [#GaveACup](#).

Plan Your Pledge for GivingTuesday 2024

The ASE Foundation will be participating in the annual global generosity movement known as GivingTuesday this December. This global day of giving falls on the Tuesday following Thanksgiving. Join us and donate **December 1 to December 7** as we embark to raise an ambitious goal of **\$35,000!**



Pledged support greatly improves our fundraising success. If you plan to donate for GivingTuesday, contact Sophie Pumphrey at SPumphrey@ASEcho.org to let her know you'd like to make a pledge!

It's never too early to start thinking about your 2024 charitable contributions. Learn about the numerous ways you can give to the ASE Foundation [here](#).

[Donate to the ASE Foundation Today](#)



ASE Foundation

ANNUAL APPEAL

Making a **WORLD** of Difference

American Society of Echocardiography | 2530 Meridian Parkway Suite 450 | Durham, NC 27713
US

[Unsubscribe](#) | [Update Profile](#) | [Constant Contact Data Notice](#)

